

PXI

Getting Started with PXI-8231 for Windows

WINDOWS ME/98

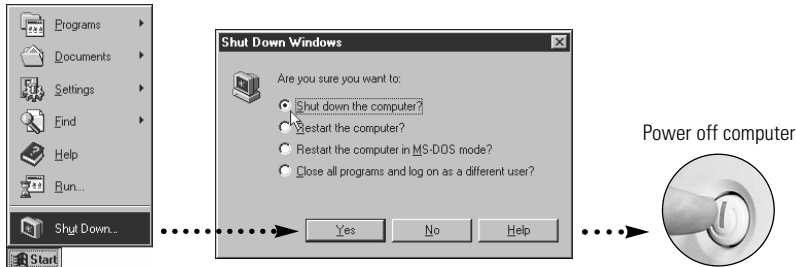
WINDOWS 2000/XP

WINDOWS NT 4.0

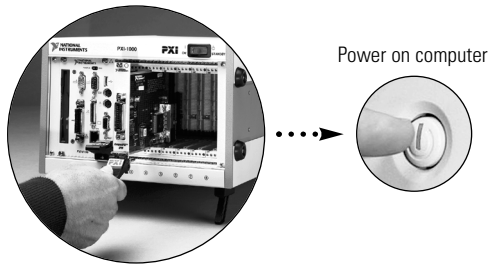
Please turn to the correct section
for your operating system.

No CD-ROM drive?
Please see back cover for
alternative installation options.

- 1 Shut down, then power off computer.



- 2 Install hardware and cables, then power on computer.



- 3 Install the PCI-PCI Bridge Driver.

Windows automatically detects the new hardware.

Follow the prompts in the Wizard. Select the recommended options when given a choice. If Windows asks where to search for a new driver, clear all checkboxes and click **Next**. If a Wizard did not appear, proceed to the next step.

Continue to step 4 ▶

4

Install the Windows Me/98 Ethernet Drivers.


Windows 98


Windows automatically detects the new hardware and displays an **Add New Hardware Wizard** window. Insert the *PCI/PXI Gigabit Ethernet Adapters* CD-ROM and follow the directions presented. Choose the **Recommended** options when given a choice.



If Windows asks where to search for a new driver, make sure the box next to **CD-ROM Drive** is checked and click **Next**.



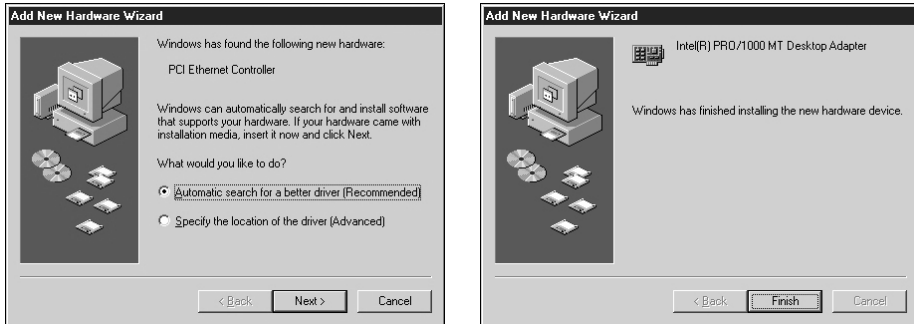
 **TIP** If Windows displays a dialog box indicating it cannot locate a file on the *Intel PRO Adapter* CD-ROM, insert the *PCI/PXI Gigabit Ethernet Adapters* CD-ROM and tell Windows to copy files from the `Win98ME` directory of the CD-ROM drive (typically `d:\Win98ME\`).

 **TIP** If Windows displays a dialog box indicating it cannot locate a file on the Windows 98 CD-ROM, try inserting the Windows 98 installation CD-ROM, telling Windows to copy files from either the top directory or the `win98` directory of the CD-ROM drive (typically `d:\` or `d:\win98\`).

Step 4 continued on page 5 ▶

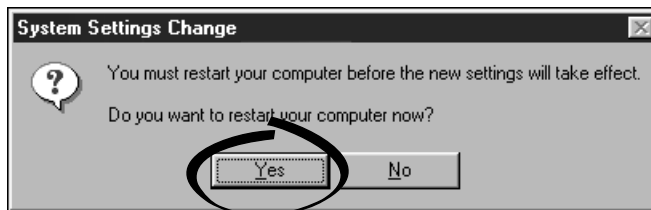
Windows Me

Windows automatically detects the new hardware and displays an **Add New Hardware Wizard** window. Insert the *PCI/PXI Gigabit Ethernet Adapters* CD-ROM and follow the directions presented. Choose the **Recommended** options when given a choice and click **Next**.



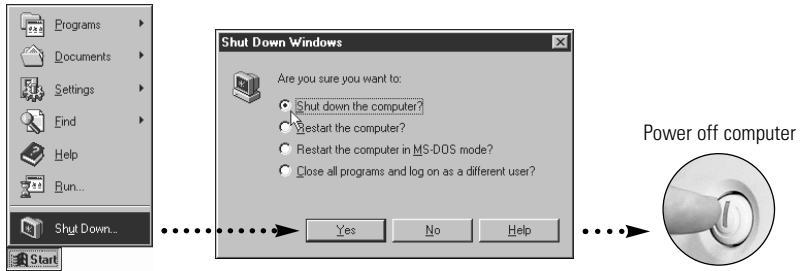
For help on cabling instructions and troubleshooting tips, refer to the *PCI/PXI Ethernet Adapters Installation Guide* on the *PCI/PXI Gigabit Ethernet Adapters* CD-ROM.

5 Restart computer, then connect to your network.

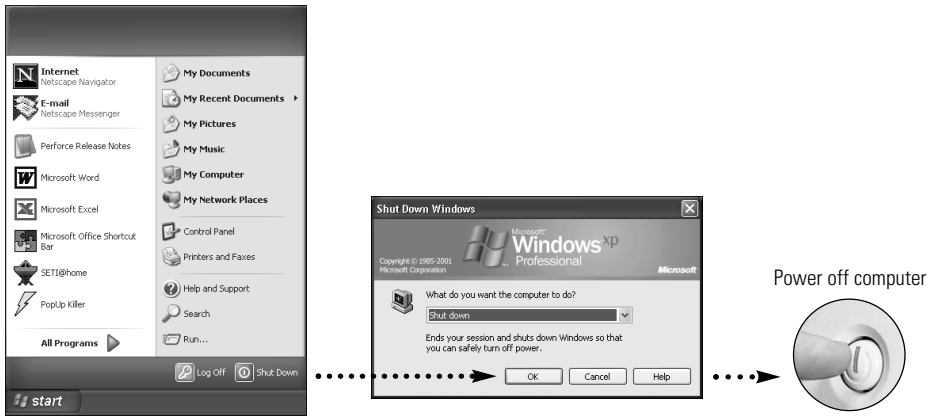


PXI-8231 for Windows 2000/XP

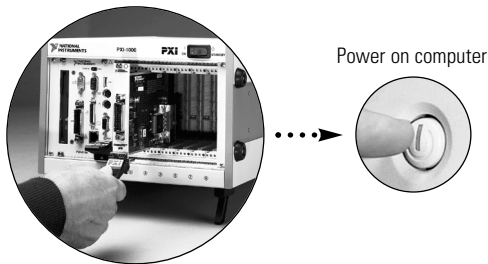
1 Shut down, then power off computer.



WINDOWS 2000/XP



2 Install hardware and cables, then power on computer.



3

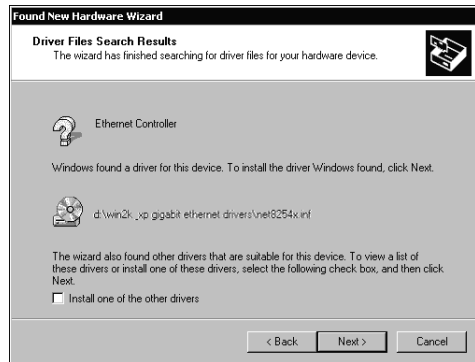
Install the Windows 2000/XP Ethernet Drivers.

Windows 2000

Windows automatically detects the new hardware and displays a **Found New Hardware Wizard** window. Insert the *PCI/PXI Gigabit Ethernet Adapters* CD-ROM and follow the directions presented. Choose the **Recommended** options when given a choice.



If Windows asks where to search for a new driver, make sure the box next to **CD-ROM Drive** is checked and click **Next**.



Step 3 continued on page 8 >

3 Install the Windows 2000/XP Ethernet Drivers. *(continued)*

Windows XP

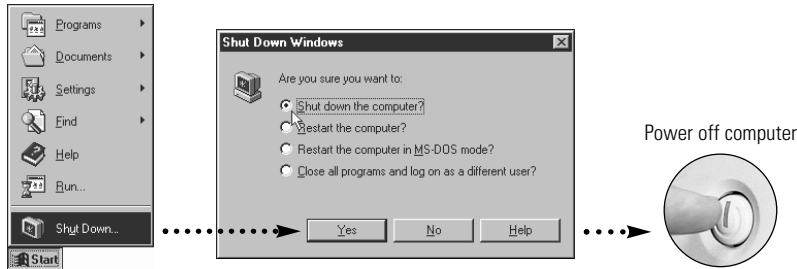
Windows automatically detects the new hardware and displays a **Found New Hardware Wizard** window. Insert the *PCI/PXI Gigabit Ethernet Adapters* CD-ROM and follow the directions presented. Choose the **Recommended** options when given a choice and click **Next**.



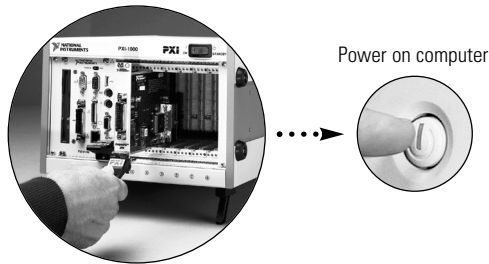
TIP If Windows displays an **Insert Disk** dialog box indicating it cannot locate a file on the *Intel PRO Adapter* CD-ROM, insert the *PCI/PXI Gigabit Ethernet Adapters* CD-ROM and tell Windows to copy files from the `win2kXP` directory of the CD-ROM drive (typically `d:\win2kXP\`).

For help on cabling instructions and troubleshooting tips, refer to the *PCI/PXI Ethernet Adapters Installation Guide* on the *PCI/PXI Gigabit Ethernet Adapters* CD-ROM.

- 1 Shut down, then power off computer.



- 2 Install hardware and cables, then power on computer.



- 3 Install the PCI-PCI Bridge Driver.


Windows automatically detects the new hardware. Follow the prompts in the Wizard. Select the recommended options when given a choice. If Windows asks where to search for a new driver, clear all checkboxes and click **Next**. If a Wizard did not appear, proceed to the next step.


Continue to step 4 ▶

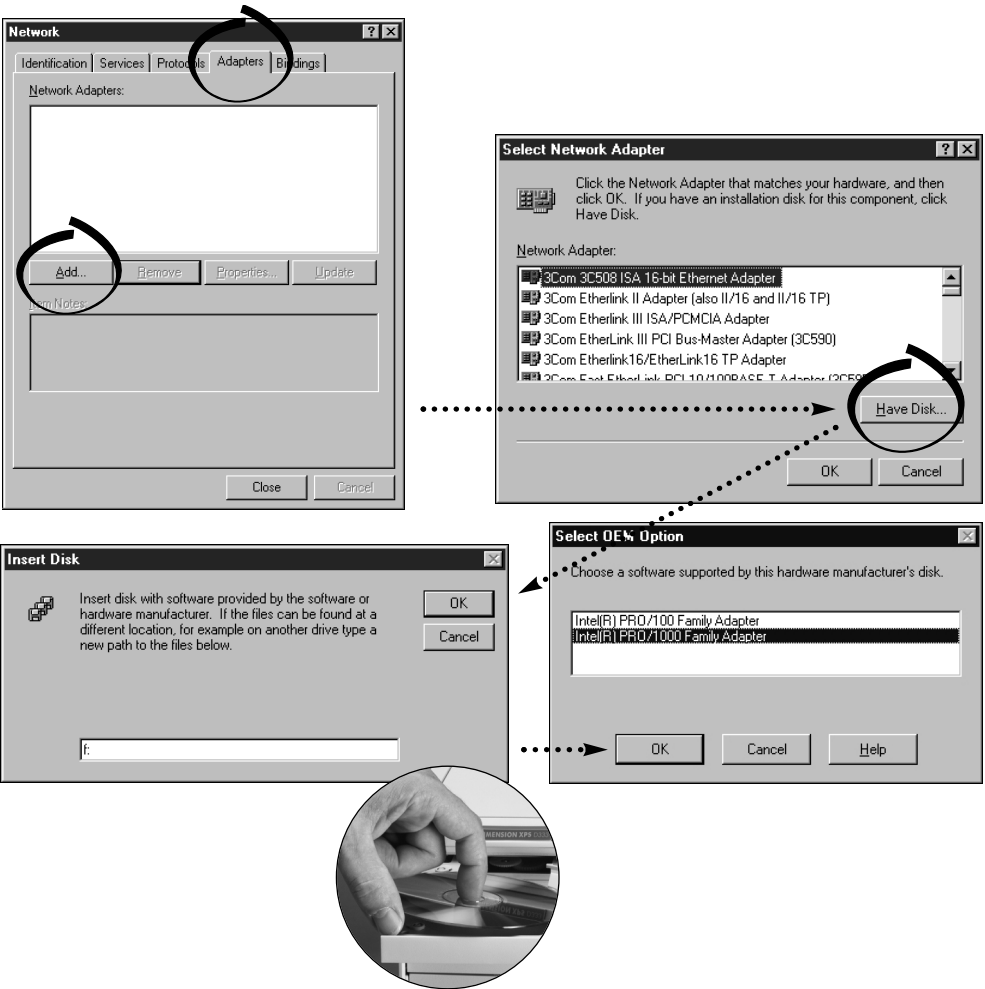
4

Install the Windows NT 4.0 Ethernet Drivers.

Select **Start»Settings»Control Panel»Network»Adapters** and click **Add**. Click **Have Disk** and insert the *PCI/PXI Gigabit Ethernet Adapters* CD-ROM. You may also be prompted for the original Windows NT CD-ROM.

 **NOTE** Service Pack 5 or later is required for Ethernet driver installation. Advanced features require Service Pack 6a or later.

 **NOTE** When installing adapters on a Windows NT system with no other adapters installed, you must install Networking support.

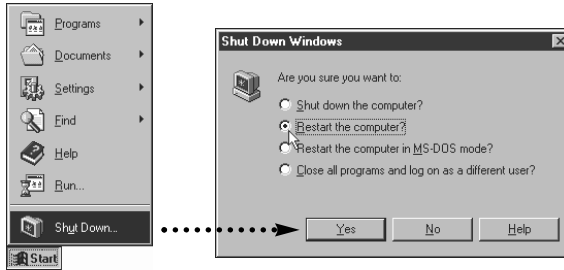


PCI/PXI Ethernet Adapters CD-ROM

 **TIP** If Windows displays an **Insert Disk** dialog box indicating it cannot locate a file on the *Intel PRO Adapter* CD-ROM, insert the *PCI/PXI Gigabit Ethernet Adapters* CD-ROM and tell Windows to copy files from the `winNT` directory of the CD-ROM drive (typically `d:\winNT\`).

For help on cabling instructions and troubleshooting tips, refer to the *PCI/PXI Ethernet Adapters Installation Guide* on the *PCI/PXI Gigabit Ethernet Adapters* CD-ROM.

5 Restart computer, then connect to your network.



Alternative Driver Installation Options for the PXI-8231

The installation instructions illustrated for each operating system in this document are appropriate for most users. However, if your PXI chassis does not contain a CD-ROM drive, try one of the following alternatives to load the Ethernet driver.

- If you have an existing Ethernet connection in your PXI chassis, download the Intel Ethernet driver from the National Instruments Web site. Access the **Drivers and Downloads** page at ni.com/download/.
- Connect an external CD-ROM, such as a USB CD-ROM, and load the Ethernet driver directly from the *PCI/PXI Ethernet Drivers CD-ROM*.
- Use another computer that has a CD-ROM to copy the Ethernet driver onto a 3.5 in. floppy disk.
 1. Open a DOS command window.
 2. Change to the directory on the CD-ROM that matches the OS you want to use with the diskette.
 3. Change to the `\MAKEDISK` directory.
 4. Depending on your OS choice, type: `MAKE2KXP`, `MAKENT`, or `MAKE98ME` [destination (optional; A: if not specified)].



ni.com

Go to ni.com/support for the most current manuals, examples, and troubleshooting information. For telephone support in the United States, create your service request at ni.com/ask and follow the calling instructions or dial 512 795 8248. For telephone support outside the United States, contact your local branch office:

United States 512 683 0100

Australia 03 9879 5166, Austria 0662 45 79 90 0, Belgium 02 757 00 20, Brazil 55 11 3262 3599, Canada (Calgary) 403 274 9391, Canada (Montreal) 514 288 5722, Canada (Ottawa) 613 233 5949, Canada (Québec) 514 694 8521, Canada (Toronto) 905 785 0085, China 86 21 6555 7838, Czech Republic 02 2423 5774, Denmark 45 76 26 00, Finland 09 725 725 11, France 01 48 14 24 24, Germany 089 741 31 30, Greece 01 42 96 427, Hong Kong 2645 3186, India 91 80 4190000, Israel 03 6393737, Italy 02 413091, Japan 03 5472 2970, Korea 02 3451 3400, Malaysia 603 9596711, Mexico 001 800 010 0793, Netherlands 0348 433466, New Zealand 09 914 0488, Norway 32 27 73 00, Poland 22 3390 150, Portugal 210 311 210, Russia 095 238 7139, Singapore 65 6 226 5886, Slovenia 3 425 4200, South Africa 11 805 8197, Spain 91 640 0085, Sweden 08 587 895 00, Switzerland 056 200 51 51, Taiwan 02 2528 7227, United Kingdom 01635 523545

National Instruments™, NI™ and ni.com™ are trademarks of National Instruments Corporation. Product and company names mentioned herein are trademarks or trade names of their respective companies.

For patents covering National Instruments products, refer to the appropriate location: **Help»Patents** in your software, the `patents.txt` file on your CD, or ni.com/patents.

© 2000–2002 National Instruments Corporation. All rights reserved.



323522A-01

Dec02